

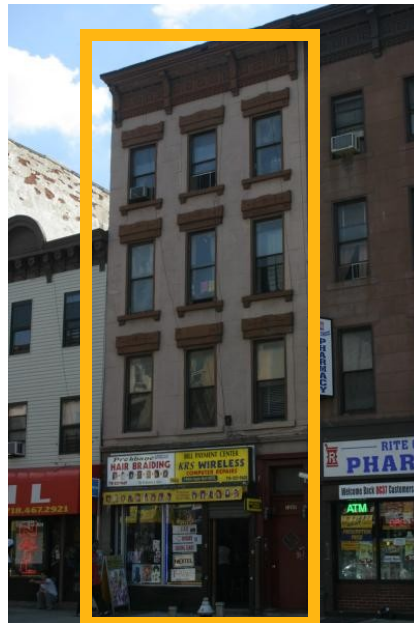
## 1486 FULTON STREET Prime Brooklyn Location

### CENTURY 21 MIZRAHI REALTY

916 Kings Highway  
Brooklyn NY 11223  
718-998-5700 Tel  
718-998-5804 Fax

email-  
sammizrahi@aolcom

Web-  
[Century21retaileasing.com](http://Century21retaileasing.com)



Property details:  
LOT : 20 X 100  
BUILDING :20 X 50  
4,000 SQ FT Building  
TAXES: \$13,000  
WATER: \$4,000  
OIL HEAT: \$5,000  
INSURANCE: \$3,200  
ELECTRIC: \$1,200

[MAP](#)

**OFFERED AT- \$750,000**

**Demographics**

**Neighbors-**  
**Dunkin Donuts**  
**Food Town**  
**Rite Aid, CHASE**  
**Duane Reade**  
**Jimmy Jazz**  
**H & R Block**  
**SUBWAY**  
**APPLEBEE'S**  
**METRO PCS**

1,000 sq ft Store plus Basement No Lease.(\$4,000 projected)

3 THREE BEDROOM APTS : \$1,500/\$1320/\$250 RC

GREAT RETAIL TRAFFIC LOCATION IN BEDFORD STY

BROWNSTONE 4 STORIES/ HALF BLOCK FROM RESTORATION

PLAZA, NEXT TO KINGSTON TRAIN STATION AND BUS STOP

FOR DETAILS CONTACT SAMUEL MIZRAHI

718-998-5700